

FRANKENSTEIN

ARR. BY KEES VAN SCHIJNDEL

BYRON LEE & THE DRAGONAIRES

SKA - ♩ = 130

4

A musical staff in 4/4 time, containing a long horizontal line with repeat signs at both ends, indicating a full-measure rest.

①

A musical staff starting with a circled '1' above the first measure. The first measure contains a quarter note G4, an eighth note A4, and an eighth note B4. The second measure contains a quarter note C5 with a sharp sign. The following six measures each contain a whole rest.

A musical staff containing seven measures, each with a whole rest.

②

A musical staff starting with a circled '2' above the first measure. The first measure contains a quarter note G4, an eighth note A4, and an eighth note B4. The second measure contains a quarter note C5 with a sharp sign. The following six measures each contain a whole rest.

A musical staff containing seven measures, each with a whole rest.

③

A musical staff starting with a circled '3' above the first measure. The first measure contains a quarter note G4, an eighth note A4, and an eighth note B4. The second measure contains a quarter note C5 with a sharp sign. The following six measures each contain a whole rest.

④

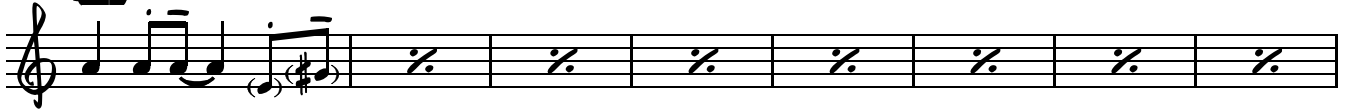
A musical staff starting with a circled '4' above the first measure. The first measure contains a quarter note G4, an eighth note A4, and an eighth note B4. The second measure contains a quarter note C5 with a sharp sign. The following six measures each contain a whole rest.

A musical staff starting with a circled '4' above the first measure. The first measure contains a quarter note G4, an eighth note A4, and an eighth note B4. The second measure contains a quarter note C5 with a sharp sign. The following six measures each contain a whole rest.

A musical staff starting with a circled '4' above the first measure. The first measure contains a quarter note G4, an eighth note A4, and an eighth note B4. The second measure contains a quarter note C5 with a sharp sign. The following six measures each contain a whole rest.

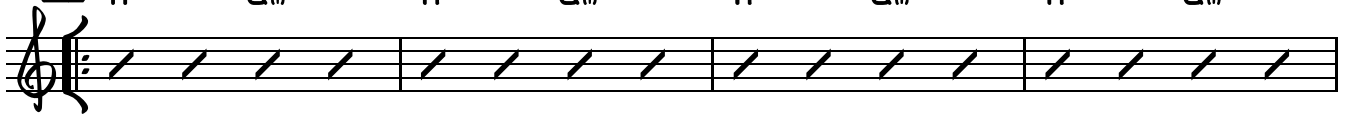
BAS TUBA IN B \flat

5



6

A SOLO'S Gm A Gm A Gm A Gm



A Gm A Gm A Gm A Gm



7

FADE-OUT

